

CHELSEA® 252 SERIES

PowerShift PTO Allison, Aisin, Ram

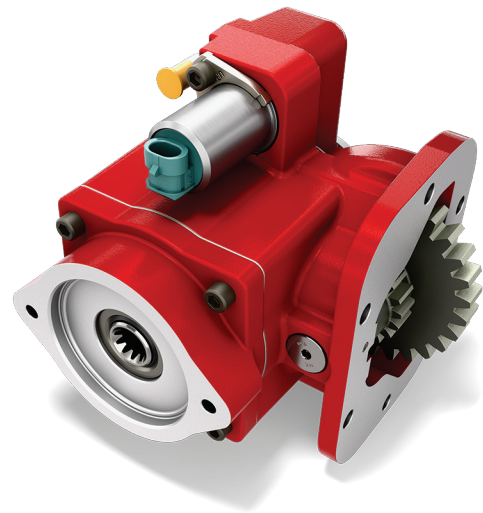
Parker Chelsea understands that your time is valuable, that's why our 252 Series PTO is designed with ease of installation in mind. No longer do you have to deal with the hassles created by remote solenoids or the routing of multiple hoses. The 252 Series is designed with an integrated cartridge valve and one hose to save time on your installation. The housing was designed to slip through the floor access panel so you will not have to drop the exhaust system providing you with another time savings on your installation. The 252 Series comes standard with the unmatched reliability and toughness you have come to expect from Parker Chelsea.

Applications:

- Dump
- Aerial
- Tow & Recovery
- Tire Service

Product Features and Benefits:

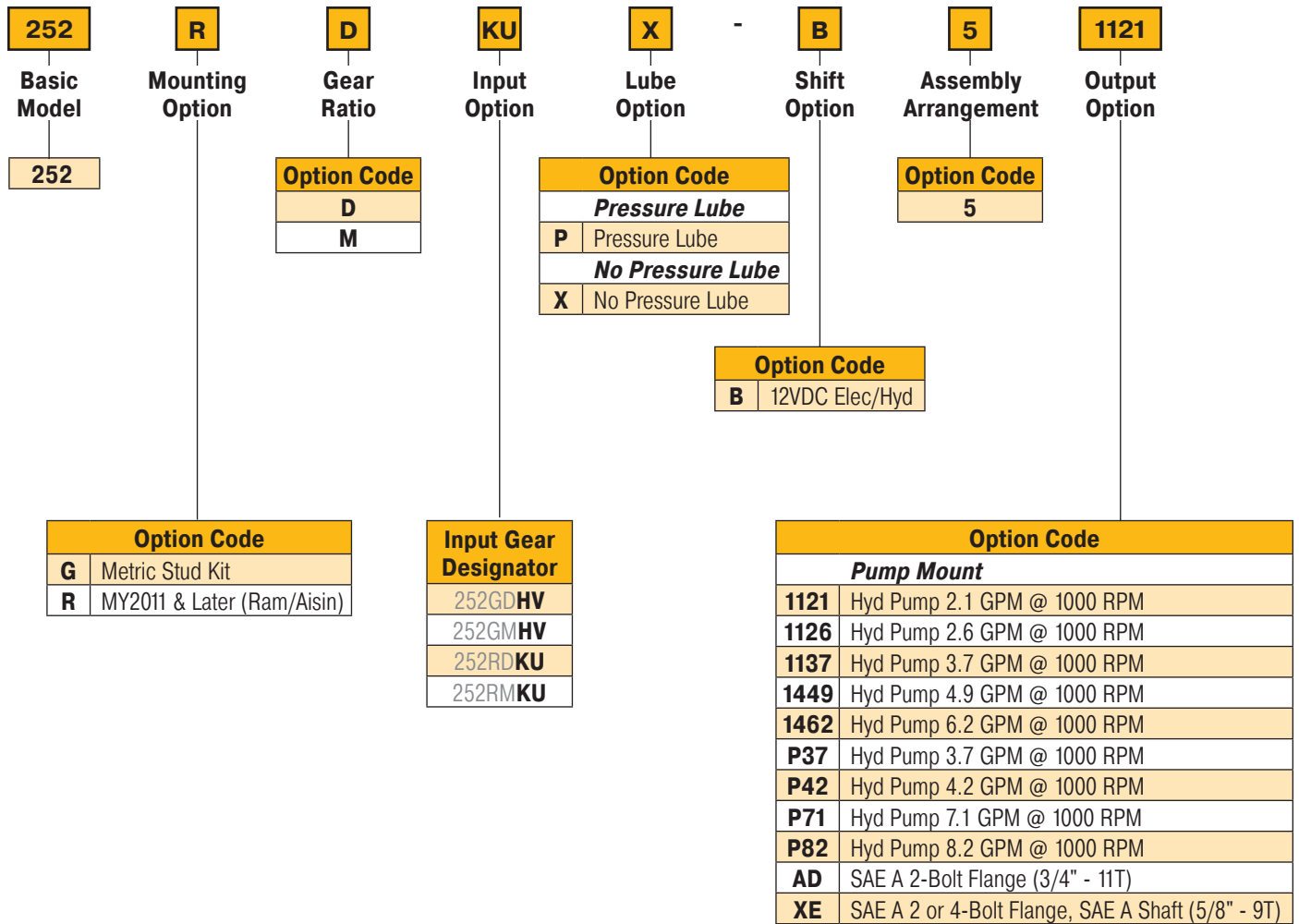
- Controlled Compression Interface Gasket – Eliminates the setting of gear backlash.
- Lightweight Housing Design – Allows for maximum heat dissipation.
- Excellent Gear Contact Ratio – Quiet operation.
- Weather Tight Electrical Connectors – Secure under vehicle connections.
- Integrated Cartridge Valve – Reduced installation time.
- Compact Size – Can fit through Dodge floor access panel for transmission installation saving time.
- Torque up to 120 lb-ft – Able to power your application requirements.
- Two Speed Ratios – Coverage for varying applications.



252 Series



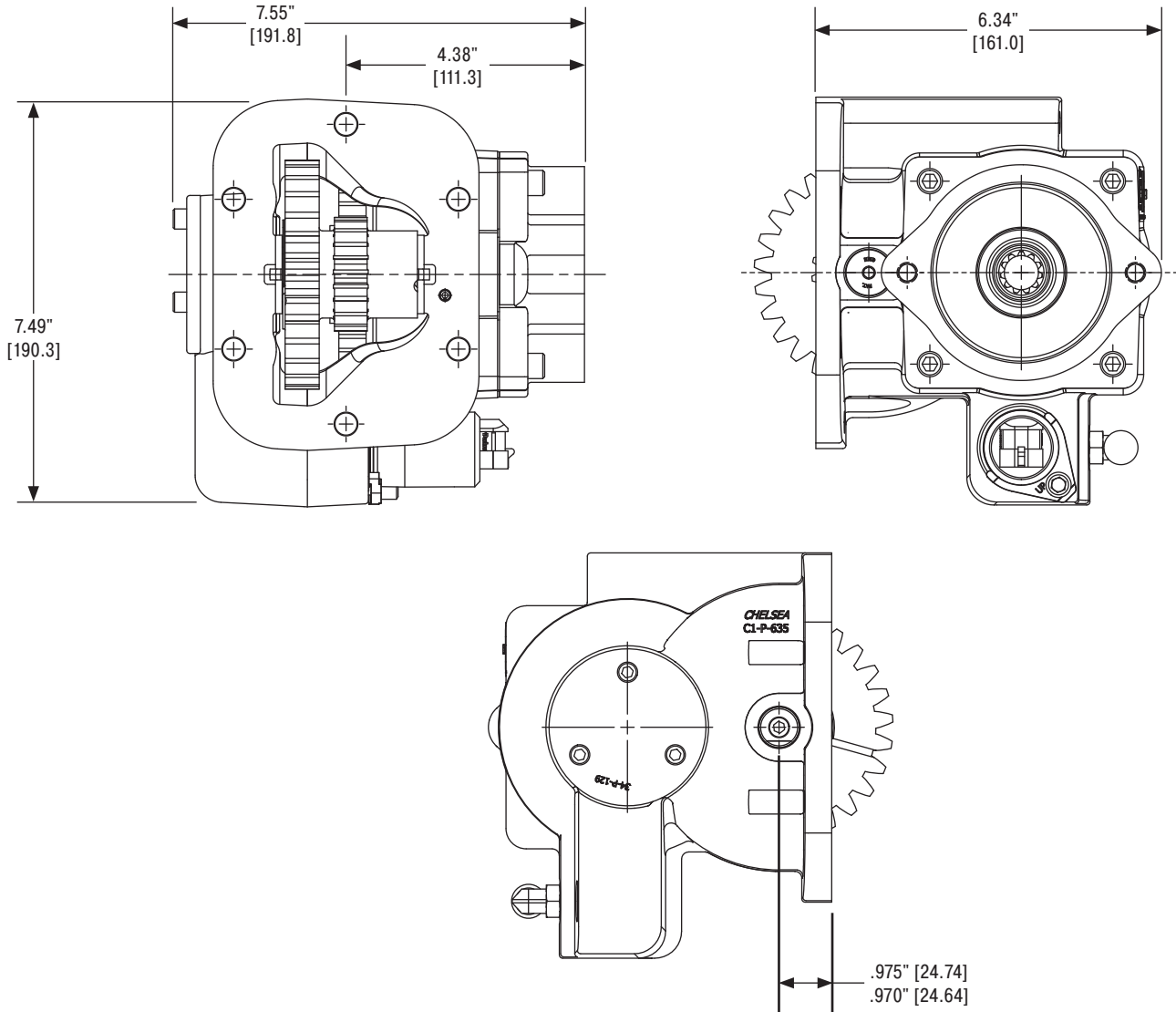
252 Series Power Take-Off – Allison, Aisin, Ram Model Number Designator & Specifications



252 Pumps offered in the PGP511 (3/4" - 11T / SAE A Flange – AD Output)								
Option Order Code	Chelsea Pump Model	Displacement (in ³ /rev)	Displacement (Gal/rev)	Max Pressure PSI	Max Speed RPM	Shaft Size	Porting	
							Inlet	Outlet
P37	CGP-P11C037-5AC	0.85	0.004	3988	3300	3/4" - 11T	SAE12	SAE10
P42	CGP-P11C042-5AC	0.98	0.004	3988	3000	3/4" - 11T	SAE12	SAE10
P55	CGP-P11C055-5AC	1.28	0.006	3408	2800	3/4" - 11T	SAE12	SAE10
P71	CGP-P11C071-5AC	1.65	0.007	2900	2400	3/4" - 11T	SAE12	SAE10
P82	CGP-P11C082-5AC	1.89	0.008	2465	2300	3/4" - 11T	SAE12	SAE10

252 Series Power Take-Off – Allison, Aisin, Ram

Dimensions – For PTO output information see application catalog



Parker Hannifin Corporation
Chelsea Products Division
8225 Hacks Cross Road
Olive Branch, MS 38654 USA
phone 1-888-PH4-TRUK (1-888-744-8785)
chd_support@support.parker.com
www.parker.com/chelsea

HY25-0082-B1/US June 2026

© 2026 Parker Hannifin Corporation

